

P A S S I O N a n d P U R P O S E



a year of building bridges



Table of Contents

- From the Chair and Executive Director
Albert Wright and Gaye Morris Smith 1
- Success Story
Emma Sinkfield – A Strong Foundation 2
- Community Support
Paula Semple – A Trainer with the Midas Touch 4
- State Initiatives
Arianne Weldon – Promoting Family Support Principles 6
- Public Affairs and Policy
Kathy Young – Linking People to Information 8
- Fund Development
Etta Reteneller – Delivering Contracts with a Smile . . 10
- Evaluation
Steve Erickson – Helping Communities Measure Results 12
- Finance and Administration
Don Walraven – Pillars of Support 14
- The Next Generation
Chranda Ficklin – Sowing the Seeds for a Brighter Future 16
- Improving Results
Communities Making a Difference 17
- Family Connection Collaboratives 18
- Family Connection Board and Staff 20



a year of building bridges

Family Connection Partnership, Inc., (FCP), is a nonprofit, public/private partnership created by the State of Georgia and funders from the private sector. We assist communities in addressing the serious challenges facing Georgia’s children and families. We also serve as a resource to state agencies across Georgia that work to improve the lives of children and families. Working jointly with Family Connection county collaboratives, we are implementing a vision for community-based support systems that will build a better future for our communities.

For information on Family Connection Partnership support and services contact:

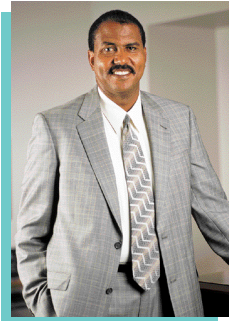
Public Affairs & Policy
(404) 527-7394
www.georgiafamilyconnection.org

The communities we assist are called Family Connection county collaboratives, the largest statewide network of communities in the nation that works together to improve results for children and families. Each community develops and implements a strategic plan to improve results in at least one of five result areas: Healthy Children, Children Ready for School, Children Succeeding in School, Strong Families, and Self-Sufficient Families.

According to the *2003 Georgia KIDS COUNT*, Georgia is **making gains in 16 out of 24 indicators**. We still need improvement in eight indicators but the results show that local collaboration and local decision-making improve results for children.

FROM THE CHAIR AND EXECUTIVE DIRECTOR

Albert Wright
Board Chair
Family Connection Partnership



The beginning of 2003 presented us with hope and concern—hope that our state’s economy would trend upward and a true concern of the effect a shortfall of funds might have on our ability to impact the lives of children and families within our great state.

Throughout these difficult times our board focused on streamlining our organization and reducing expenses. We also directed our efforts toward finding new sources of funding in order to sustain the Family Connection network of collaboratives in 154 counties.

I am excited and proud to say that in spite of difficult times for those who provide health and human services, we have emerged as a viable productive entity that is respected statewide. The origin of this respect is directly attributed to the dedication and passion of the wonderful people who make up Family Connection Partnership.

A handwritten signature in black ink, appearing to read "Albert Wright".

Albert L. Wright
Chair

Gaye Morris Smith
Executive Director
Family Connection Partnership



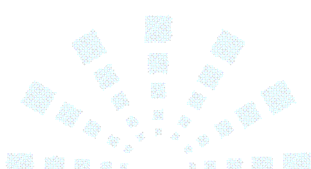
More than a year ago, when I addressed our collaborative partners at our biennial conference, many of you heard me talk about the three ingredients that Family Connection Partnership mixes to realize our vision: purpose, passion, and power.

Our purpose is clear—we continue to support a network of community collaboratives and promote local decision-making and accountability. Our passion runs deep—we remain tenacious in promoting the work of Georgia’s communities and state partners to improve the lives of children and families. Our collective power transforms—we continue to build on our successes, take risks, be innovative and, thus, risk failure knowing that the full potential of a network of local collaboratives has yet to be tapped.

Helen Keller once observed, “Alone we can do so little but together we can do so much.” Thank you to our Board of Directors, community collaboratives, funders, elected officials, and state partners for support of Family Connection this past year. That support demonstrates our belief that communities understand best the needs of their children and how to use resources to respond effectively.

A handwritten signature in black ink, appearing to read "Gaye Morris Smith".

Gaye Morris Smith
Executive Director



A STRONG FOUNDATION



Emma Sinkfield

Executive Director
Quality of Life
Association

(A Family Connection partner)

***“It’s a good thing to start out at the bottom.”** When it comes to Family Connection Partnership, Emma Sinkfield gets the big picture. After all, she says she grew up as a “program child” in Georgia, joined a community advocacy group as a young adult, helped build the Warren County Family Connection collaborative, and now serves on the Family Connection Partnership Board of Directors.*

Like too many children in Georgia, Emma says she grew up with the odds stacked against her. “I came from a hyper-poor family with 12 siblings and a mom and dad who only had 10 years of education between them,” Emma explained.

Fortunately, Emma’s parents were passionate about their family. When her dad couldn’t find work in Warrenton, Georgia, he went to New York and found work driving a concrete truck to support his family. When her mom discovered that education held the key to breaking their cycle of poverty, she became determined that all of her children would finish high school. All 12 children did.

Emma inherited her passion for community from her parents. In 1989, she turned that passion into purpose when she joined the Quality of Life Association (QUOLA) for Warren County, Inc., whose mission is to help families become self-sufficient.

“We searched out organizations and agencies with a similar mission and started pulling together a team of partners in Warren County,” Emma said. QUOLA worked with the Chamber of Commerce, Juvenile Justice, Head Start, and the Health Department to submit a grant but the grant wasn’t awarded.

About that time, the QUOLA team started hearing about Family Connection. “We first heard of Family Connection through its newsletter and through its public relations in neighboring counties,” Emma said. The QUOLA team learned that Family Connection wasn’t just another government program—it was an initiative backed by the governor.

The idea was simple—form community-based groups called collaboratives and give them the power to make local decisions.

“QUOLA was interested in learning more, so we started going to Family Connection training sessions,” Emma said. “We learned that Family Connection helps collaboratives develop, implement, and evaluate a strategic plan that improves results for children and families in five targeted areas: Healthy Children, Children Ready for School, Children Succeeding in School, Strong Families, and Self-Sufficient Families.”

QUOLA also received specialized training in setting up a collaborative, creating and submitting a strategic plan, and submitting grants. In 1999, the QUOLA team submitted its plan and became the leading partner for the Warren County Family Connection collaborative. They also submitted a grant, which was funded this time.

Today, QUOLA knows they’re making a difference in Warren County because they can measure their results. According to the *2003 Georgia KIDS COUNT* report, which provides data on the status of children in Georgia, Warren County shows improved results in reducing teen pregnancies and absences from school. These are just two of the areas QUOLA focused on in the strategic plan.

Improving Results:

Healthy Children

Children Ready for School

Children Succeeding in School

Strong Families

Self-Sufficient Families

2003 Georgia KIDS COUNT Report – Warren County

		1997	1998	1999	2000	2001
Pregnancies, ages 15-17 (Numbers)	Warren	7	4	7	9	3
	GA	9,759	8,875	8,504	8,038	7,571
	Warren	20.0%	24.7%	21.5%	14.6%	n/a*
Absence from School (Percent)	GA	29.5%	30.0%	28.8%	28.3%	n/a*

* Information not available

Emma’s parents would be proud. Not only is Emma helping to break the cycle of poverty in Georgia, she is a shining example for her family and community. In 1997, Emma graduated second in her class at Augusta State University. In 1989, she became Executive Director of QUOLA. And in 2001, she was elected to the Family Connection Partnership Board of Directors.

“It’s been very enlightening to be on the board of directors,” Emma said, *“where everyone recognizes that the focus of work and the power of local decision-making is at the community level.”* With this type of ‘bottom up’ structure, it’s a good thing to start out at the bottom.”



A TRAINER WITH THE MIDAS TOUCH



Paula Semple
Community Facilitator
Family Connection
Partnership

Ten days out of twenty, Paula Semple loads her family-sized van with training materials, kisses her stay-at-home husband, Jim, and sons, Kyle, Brandon, Adam, and Caleb, and then hits the road to deliver community support across Georgia, covering on average 1,500 miles a month.

“There’s never been a point in my life when I didn’t want to teach,” Paula said, “and I love being part of a team that provides such a variety of support to our communities and partners.”

Paula’s passion for family, teaching, and community support makes her especially responsive to assessing, developing and delivering technical assistance and support. In her director’s words, “Everything she touches is golden.”

responsive

adj. Readily reacting to requests, suggestions, influences, or efforts

Focus on Forums

Dialogues were intended to provide a constructive review of collaboratives’ strategic plans but community feedback showed a high level of frustration with this process.

*“Dialogues seem reactive – you give us advice after we’ve already finished our plan.”
“We wish we had guidance earlier in the planning process.”*

Family Connection Partnership Community Facilitator Lou Caputo chaired a committee to develop a better process. The result? A proactive, pre-plan, two-stage process called Forums.

During the first stage, called pre-site visits, the community facilitator works with collaborative/community leaders to develop an agenda for their Forum based on the collaborative’s needs in designing their three-year plan. During the second stage, called Forums, this same team gathers for three-to-four hours and leaves with a “plan to plan”—a structured outline for preparing an optimal three-year strategic plan.

The Family Connection Partnership Community Support team builds the capacity of our personnel, collaboratives, and partners to develop the relationships, knowledge and skills necessary to implement community-driven plans.

They are committed to providing high-quality technical assistance and training that significantly impact the effectiveness of community practice while supporting state and national policy and initiatives.

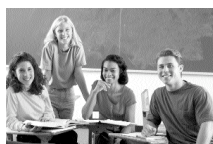
The Community Support team's job is to help collaboratives find the answers to their questions because, while every collaborative is focusing on improving results for children and families, each collaborative is unique.

In 2002, the Community Support team focused on developing a responsive technical assistance delivery system, assessing staff development needs, and identifying additional training and technical assistance resources to broker for collaboratives.

2003 Highlights – Community Support

■ Learning Institutes and Technical Assistance

- Provided 196 training and technical assistance site visits in the areas of evaluation, finance, governance, collaborative development, and plan development
- Developed and delivered 18 one-day workshops, called learning institutes, covering six topics
- Supported the Family Connection Winter Training Event, which drew more than 250 participants
- Developed and implemented 12 workshops on the new electronic quarterly report formats and provided ongoing technical support, as needed



- Developed training on resourcing community plans and private nonprofit management
- Developed orientations for fiscal agents, collaborative chairs, and collaborative coordinators for the Family Connection conference
- Provided technical assistance to five pilot counties of the Covering Kids Coalition

- Developed 501(c)3 training curriculum for private nonprofit collaboratives



- Conducted technical reviews of community annual and three-year plans in six sessions for 77 counties

- Brokered training and technical assistance to partners and communities

■ Community Response

- Established a creative design team to function as an innovative leader and to research cutting-edge practices with nationally recognized organizations
- Responded to community feedback by developing a new forum process to address multi-year community strategic plans

- Developed a response protocol for technical assistance and inquiries
- Solicited community input and redesigned community strategic planning process
- Held monthly meetings of the Regional Partners Network in select regions to promote available resources to collaboratives



Improving Results:

Healthy Children

Children Ready for School

Children Succeeding in School

Strong Families

Self-Sufficient Families



Developed new dialogue process for counties preparing three-year plans

Received and reviewed annual plans from communities

Delivered learning institutes to six regions on collaborative development

Delivered learning institutes to six regions on prevention strategies

Provided customized TA visits to 70 communities

Assisted communities in three-year strategic planning process

Delivered learning institutes to six regions on Resourcing Your Community Plan

J U N 03

PROMOTING FAMILY SUPPORT PRINCIPLES



Arianne Weldon
Medicaid Liaison
Family Connection
Partnership

Arianne Weldon asked a north Georgia county how it successfully implemented a Children at Risk of School Failure Family Advocate Program. They summed it up in five words: “We talked to each other.”

That came as no surprise to Arianne, who is the Medicaid liaison to the program and an expert on building relationships. “My biggest accomplishment is when Family Advocate Program providers collaborate to offer seamless services for children,” she said. “This community collaborative ‘system’ of case management expands resources and builds the capacity to measure and improve results for children.”

Arianne uses her passion for children, education, and building relationships to promote family support principles and build relationships with partner agencies.

intentional

adj. Being done deliberately, with purpose and a course of action to follow

Focus on the Children’s Trust Fund Commission

Susan Phillips, Executive Director, Georgia Children’s Trust Fund

The Children’s Trust Fund Commission understands that there can be no “quick fix” for the family conditions that contribute to child abuse and neglect. Resources must be invested both in programs to support families before abuse occurs and in helping communities learn how to understand, approach, and then remediate the underlying causes of abuse.

The Commission continues to believe that supporting Family Connection prevention priorities in individual communities and providing funds to support the infrastructure of the state-level Family Connection Partnership will yield the best return on the Commission’s investment of its limited prevention resources.



The Family Connection Partnership State Initiatives team links community priorities and practices to state and national initiatives.

Improving Results:

Healthy Children

Children Ready for School

Children Succeeding in School

Strong Families

Self-Sufficient Families

The State Initiatives team's job is to establish and strengthen relationships with regional, state, and national partners to achieve shared goals, priorities and principles; develop and implement initiatives that achieve mutual goals; and promote the practice of family support.

In 2003, the State Initiatives team focused on promoting family support principles, supporting collaboratives through Peer-to-Peer Network and the Leadership Council, initiating a series of Parent Engagement Days, providing training for Regional Family Advisors, linking Family Connection Partnership to state and national partners, and implementing key initiatives.

2003 Highlights – State Initiatives

■ Early Childhood Initiative (ECI)

- Served more than 1,500 families in five north Georgia sites covering five ECI component areas
- Coordinated monthly cross-site meetings and quarterly steering committee meetings; built relationships with representatives of economic development sector



- Planned, organized and coordinated training for 25 frontline family support workers
- Coordinated the Georgia ECI initiative with the national Appalachian Regional Commission
- Assisted counties with integration of ECI into Family Connection strategic plan

■ Early Learning Opportunity Act (ELOA)

- Implemented initiative in four rural counties as South Georgia EXCEL (Excellence in Child Care and Early Learning); 89 families engaged within six-month period



- Established links with Literacy Volunteers of America and Georgia's Child Care Resource and Referral Agency
- Negotiated with national Parents as Teachers (PAT) office to provide training in South Georgia; 19 certified as educators and one as PAT supervisor
- Developed and coordinated ongoing monthly training for ELOA staff

■ Community Partnerships for Protecting Children (CPPC)

- Coordinated quarterly cross-site meetings for peer-to-peer learning and training
- Delivered training on Family Team Meetings in the nine CPPC counties; began development of regional trainers
- Developed monthly reporting guidelines, quarterly report format, and technical assistance in strategic planning, finance, and evaluation
- Visited original CPPC site in Jacksonville, Florida, with representatives of county and state teams
- Participated in multi-state CPPC conference

■ Earned Income Tax Credit Campaign (EITC)

- Supported three rural counties, which served more than 200 families, bringing \$135,000 in total tax refund through the initiative
- Assembled multi-organizational technical resource group for county support

■ Other Initiatives and Support

- Initiated the series, Parent Engagement Days, "More than Just a Parent," designed to increase parent involvement in local collaboratives and develop regional parent networks



Worked with DHR to identify counties for a federally-funded fatherhood initiative

Submitted supplemental grant to Robert Wood Johnson Foundation for family support

Began steering committee work on First Lady's Summit on children in foster care

Conducted workshops at four state partner conferences

Received Robert Wood Johnson Foundation supplemental grant for promoting family involvement in collaborative efforts

J U N 03

LINKING PEOPLE TO INFORMATION

**Kathy Young**

Administrative Assistant
and Web Administrator
Family Connection
Partnership

A collaborative coordinator calls Kathy Young in a panic. “I don’t know what happened but I’ve lost the formatting in my annual plan!” Kathy calmly reassures the caller that she’s here to help, then spends the next 60 minutes solving the formatting problem.

Kathy works the Family Connection Partnership helpdesk and has a passion for technology, problem solving, and helping people. People call Kathy with all types of requests, from interpreting online data about their county to locating a critical piece of information.

“When it’s a technical issue,” Kathy says, “I’m determined that the technology is not going to beat me, and I stick with it until I’ve solved the problem. And when a caller needs help finding information, I either show them where to go or link them to the right person.”

creative

adj. Having the ability or power to cause to exist or come into being through artistic or imaginative effort

Focus on Family Connection Partnership Web Site

The FCP Web site features information about real community issues and best practices, links to resources, our state initiatives, and a comprehensive evaluation toolkit.

Family Connection of Macon & Bibb County noted, “The user-friendly Web site saves time and effort in gathering information that we need to move forward in our work with families and children.”

www.georgiafamilyconnection.org



Launched
redesigned,
enhanced
FCP Web site

Organized planning
committee for
2003 FC Biennial
Conference

Conducted
information
technology survey
of community
capacity and needs

Distributed
briefing paper on
Early Learning

Launched
electronic
magazine,
Connected

Planned and
organized Family
Connection Day
and Winter
Training Event

Published two
e-magazines with
focus on Child
Health and
Community
Successes

The Family Connection Partnership Public Affairs and Policy team was created in 2002 to promote the work of the 154 Family Connection collaboratives and support their communications needs.

Improving Results:

Healthy Children

Children Ready for School

Children Succeeding in School

Strong Families

Self-Sufficient Families

The Public Affairs and Policy team is the creative backbone of Family Connection Partnership. They design, develop and implement communications strategies that support Family Connection objectives; promote the work and publicize the success of Family Connection county collaboratives; and enhance positive relationships with current and potential partners and funders.

In 2003, the Public Affairs and Policy team focused on building the Family Connection Partnership Web site, launching an electronic magazine, developing publications that support the Family Connection mission, organizing education and advocacy events, conducting public affairs tours, and developing an information technology plan.

2003 Highlights – Community Support

Public Affairs and Policy

- Created Public Affairs and Policy team in 2002
- Organized and implemented a statewide public relations tour, promoting the work of Family Connection



Partnership and providing valuable public affairs and policy information

- Developed and disseminated policy papers, including briefings and best practice fact sheets (improving Georgia's KIDS COUNT indicators by 10 percent; policy paper on early learning, and local decision-making)
- Initiated FCP county and legislative support team

Online Resources

- Developed and launched *Connected* e-magazine – a bimonthly electronic publication addressing the complex challenges facing children, families, and communities in Georgia

- Re-launched the Family Connection Partnership Web site, utilizing it to provide more information, tools, and resources

Community Resources

- Provided resources for promoting local collaboratives, such as sample press releases and tips for developing brochures and newsletters
- Designed and developed Family Connection Community Profiles

- Published *Connected to Public Policy* news bulletins to provide collaboratives with information on legislative issues and advocacy tips

Community Awareness

- Provided education material and information to the General Assembly on legislative and budgetary issues impacting children and families (developed Resource Book, contacted legislators, provided ad-hoc reports)



- Partnered with other child and family organizations to develop advocacy and public awareness material (Healthy Families Georgia, Child Health Advisory Committee, Women's Policy Group)

- Promoted the national 2003 KIDS COUNT Data Book in Georgia by creating *Georgia Fact Sheet* and press releases, and disseminating more than 300 books

Conferences and Events

- Organized the 2003 Family Connection Biennial Conference, convened the planning team and committees, identified conference theme, solicited and awarded workshop proposals, set schedule, and opened registration
- Planned, coordinated, and implemented Family Connection Day at the State Capitol, with elected officials attending from the House, Senate, and Governor's Office

Conducted Winter Training Event with more than 250 in attendance

Hosted Family Connection Day with nearly 400 in attendance

Published e-magazine with focus on advocacy

Submitted call for proposals for 2003 FC Biennial Conference workshops

Distributed briefing paper on Local Decision-Making

Finalized conference program and began registration

Published e-magazine with focus on family self-sufficiency

J U N 03

DELIVERING CONTRACTS WITH A SMILE



Etta Reteneller
Contract Manager
Family Connection
Partnership

“During contract time, things can get a little crazy around here,” says Etta Reteneller, as she dons her walking shoes for the 15-minute trip to the Department of Human Resources (DHR). That was especially true in 2003, when long budget sessions shortened the FY04 contract preparation time for collaboratives and fiscal agents.

Fortunately, Etta took advantage of the calm before the storm. “I began preparing the contract annexes early in the process, so when the DHR templates were received, I could process them quickly,” she said. Etta and the Fund Development team hand-delivered the contracts to DHR, and within two weeks, all 154 Family Connection contracts were processed and compliant, bringing in more than \$8 million for collaboratives.

Etta’s passion for children, families, and finance makes her invaluable to the Fund Development team. And when things get crazy, Etta recalls the sound advice she learned in her hobby as a clown, “Just paint that smile on and keep the balls in the air.”

diligent

adj. Marked by persevering, painstaking effort

Focus on Linking State and National Funders to Community Priorities

Family Connection Partnership has successfully linked state and national resources to selected counties in Georgia. The Annie E. Casey Foundation Earned Income Tax Credit initiative is in three rural counties; the federal Early Learning Opportunities Act initiative is in four southwest rural counties; and the Department of Community Health Children-at-Risk Targeted Case Management initiative is in 47 counties.

The Fund Development team was created in 2002 to develop a comprehensive plan to effectively support the Family Connection framework.

The Fund Development team is diligent in its work to research new funding opportunities based on community plans, sustain funding sources for Family Connection Partnership, sustain state support to county collaboratives, and build and sustain relationships with entities that impact programs and services to children.

In 2003, the Fund Development team focused on building its new department, developing and implementing a new system for tracking funding opportunities, and reviewing and processing contracts for 154 collaboratives. It also focused on linking state and national funders to community priorities.

2003 Highlights – Fund Development

■ **Funding Opportunities**

- Created the Fund Development department in December 2002
- Reviewed and forwarded 39 funding opportunities to counties in support of community plans
- Advocated for and received continued state legislative support for all county collaboratives, including new funding for reactivating five counties (\$10.1 million)



■ **System Development**

- Created a new system for identifying, reviewing and tracking funding opportunities for Family Connection Partnership and county collaboratives
- Developed and managed a proposal process for national foundations and state agencies
- Conducted quarterly

reviews of 154 contractor fiscal reports

- Completed revisions to Fund Development quarterly evaluation database, trained staff in its use, and piloted electronic submission of Microsoft Access data to evaluation team
- Provided finance administration support to state agencies and partners involved in the implementation of Community Partnerships for Protecting Children, Children-at-Risk Targeted Case Management, and local Earned Income Tax Credit initiative



■ **Special Programs**

- Developed and implemented process for managing and recognizing donor gifts, memorials, and honorariums
- Submitted proposal and received a grant from the Robert W. Woodruff Foundation to support the two-year operational plan as a match to state support for Family Connection Partnership
- Managed the development and implementation of the Children-at-Risk Targeted Case Management program and provided ongoing technical assistance to pilot counties
- Sustained and expanded support from two national foundations: the Robert Wood Johnson Foundation and the Annie E. Casey Foundation

■ **Budgeting and Reporting**

- Finalized staff briefing information on governor's 2004 budget recommendation for Family Connection Partnership and county collaborative grants
- Revised and disseminated finance publication *The Balancing Act*
- Processed quarterly county expenditure and programmatic reports and served as fiscal agent for three grants totaling \$1 million on behalf of counties



Improving Results:

Healthy Children

Children Ready for School

Children Succeeding in School

Strong Families

Self-Sufficient Families



Received \$90,000 in foundation EITC pilot funds for three rural counties

Managed Georgia KIDS COUNT funding for Annie E. Casey Foundation

Applied for six grants for FCP, including a Woodruff Foundation match for state support of FCP

Assisted in organizing a Georgia Rural Philanthropic Forum with the Sapelo Foundation

Continued state-appropriated support to local collaboratives, leveraging an additional \$19.8 million

Researched grants and posted 39 on Web site for communities

J U N 03

HELPING COMMUNITIES MEASURE RESULTS



Steve Erickson
Evaluation Consultant
EMSTAR Research, Inc.

Steve Erickson is a translator of sorts. “I connect highfalutin ideas to real life examples,” he said in describing his role on the Evaluation team. His team supports local communities by helping them use findings to improve results. But when findings only trickled in, he asked, “What will it take to get something back?”

The answer, he discovered was “examples.” Steve and team member Chris Wilson started with the basic results question, “How were the children changed?” Then they designed an easy-to-read, 10-page booklet with samples and guidelines to aid communities in writing their results evaluation reports.

Steve’s passion is building communities. “Family Connection is a place that values, builds and celebrates communities,” Steve said. “We use those words, and we actually do it.”

accountable

adj. Being held answerable or liable for providing an explanation or justification for particular actions or expenses

Focus on Roots of Collaborative Successes

Family Connection Partnership is examining the workings of six Family Connection collaboratives to determine the underlying causes of their successes. Glynn, Gwinnett, Jenkins, Mitchell, Turner and Whitfield counties are the focus of case studies to gather data on collaborative “best practices” in Georgia.

The studies will contribute to our attempt to answer the question: “What kinds of collaboratives, in what kinds of settings, creating what kinds of system changes and implementing what kinds of activities, produce what kinds of results for children?”

The Evaluation team will be integrating the results of the Family Connection Partnership Implementation Study and releasing them this fall.

The Family Connection Partnership Evaluation team builds the capacity of Family Connection to evaluate change resulting from strategies, component programs and activities.

Improving Results:

Healthy Children

Children Ready for School

Children Succeeding in School

Strong Families

Self-Sufficient Families

This team of experienced and committed consultants provides support and assistance in four areas of evaluations:

1	Organizational Accountability	Evaluates the Family Connection Partnership as an intermediary organization
2	Results Accountability	Supports the KIDS COUNT database used to measure changes in the condition of children, families and communities in Georgia
3	Capacity Building	Creates and sustains the capacity for evaluation at the state, regional and local levels
4	State Reform and Systems Change Initiatives	Provides evaluation support to projects and initiatives

In 2003, the Evaluation team focused on developing an evaluation toolkit and building community capacity.

2003 Highlights – Evaluation

Data Entry

- Developed the annual operational plan database; completed data entry for FY03



- Entered FY03 data in Self-Assessment database, completed data analyses, and produced database reports (legislative report on leveraged dollars)

- Developed, piloted, and initiated use of electronic quarterly report database

Report Generation

- Produced KIDS COUNT database, factbook, and factsheets, including more indicators and more recent data than prior versions

Training

- Developed workshops and trainings on use of KIDS COUNT data, showing how to use the data to make planning and policy decisions
- Merged the Family Connection Benchmark data with the KIDS COUNT data, making it easily accessible on the Web
- Developed case study approach to examine three high functioning and three high impact Family Connection collaboratives

- Drafted, shared, and revised a case study concept paper on the Theory of Change

- Streamlined the coding process by creating uniform codes for required reports such as the Community Strategic Plan, Annual Operational Plan, Quarterly Report and Self-Assessment



- Redesigned the quarterly narrative report and created an electronic format that could be placed in a database

Evaluation

- Delivered six Evaluation Learning Institutes, assisting counties in strategy evaluation

- Lead participant in the national task force determining relationship between local governance and improvement of results for children
- Provided statistical data to Public Affairs and Policy team for policy papers on persistent poverty and self-sufficiency

Results

- Collaborated on a publication showing the effects of improving Georgia's KIDS COUNT benchmarks by 10 percent



J U N 03

Merged Benchmark Database with national KIDS COUNT database

Reviewed county annual evaluation plans

Placed county fact sheet for each county's data on Web site

Developed and approved a process for results evaluation

Reviewed national models for assessing collaborative development

PILLARS OF SUPPORT

Every organization has them—the unsung heroes who work behind the scenes to support the staff in their daily work. This dedicated team shares their expertise so that others may accomplish the work of Family Connection Partnership.

Finance – Director Don Walraven is charged with sustaining an effective, accountable organization structure to support the mission of Family Connection Partnership. In addition to managing the Finance and Administration team, Don develops and implements Human Resources policies and procedures and oversees the fiscal accountability of the organization. Also on the finance team is Teri Callanan, who processes travel and expenses, Etta Reteneller, who processes contracts, and Linda Long, who is the budget liaison between Family Connection Partnership and the Department of Human Resources state partners.

Administration – Carlisa Beal’s primary responsibility is to support our Executive Director, Gaye Morris Smith, but she also is a pillar of support for other departments. Carlisa manages the registration for the Family Connection conference and is the “go-to” person for our board of directors. Majorie Grant is our receptionist and the voice behind Family Connection Partnership. Majorie also assists other departments in researching children and family issues and archiving news articles relevant to our organization. Bob Spiridigliozzi keeps all of our departments supplied with everything they need to perform their job. Bob also manages vendor relations for our office equipment and supplies and orders all of the Family Connection Partnership store items.

dedicated

adj. Devoted to a cause or ideal or purpose

Information Technology – James Hall is the man with the plan—the information technology plan, that is. James keeps our computer systems running smoothly and is working with consultants to develop a technology plan to ensure we have the infrastructure to deliver future support to our staff and streamline work for the community collaboratives.



Don Walraven

Director
Finance and
Administration
Family Connection
Partnership

Message from the Treasurer

The Family Connection Partnership ended FY03 in a stable financial position. We continued to diversify our funding sources by seeking additional private sector support, applying for federal grants on behalf of our counties, and working with additional state agencies. We also carefully reviewed all our spending patterns to make sure we were as efficient as we could possibly be.

We were able to address budget cuts from our primary funders without significantly reducing our services to our customers and without reducing the basic level of grants we administer to counties, though we lost eight staff positions in the process. We realize that as the economy continues to recover slowly that additional funding reductions will be recommended but we must prepare to meet these additional challenges ahead and do the very best we can to provide the support services to the counties, partner agencies and administration as in the past.

The graphs below represent our financial position at the year ended June 30, 2003. For the second year in a row, our new state entity has received an unqualified opinion on our audit. We are very proud of that fact, and I would like to personally thank all the staff involved in making that happen.

It has been a privilege to serve as Treasurer and on the Executive Committee of this impressive organization. As the Chair of a local collaborative, I see the value of a state/local partnership every day in achieving outcomes for children.

Yours in a common cause,



Bob M. Patterson
Board Treasurer

Improving Results:

Healthy Children

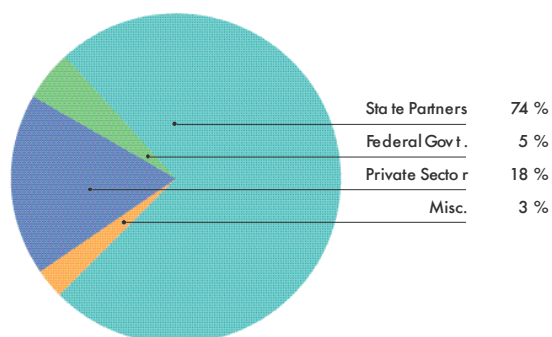
Children Ready for School

Children Succeeding in School

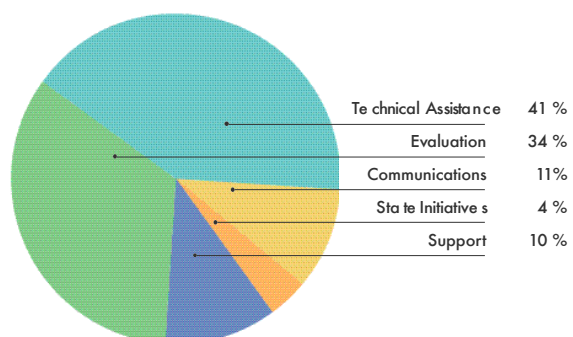
Strong Families

Self-Sufficient Families

**Family Connection Partnership
Sources of Revenue**



**Family Connection Partnership
Functional Expenditures FY03**



SOWING THE SEEDS FOR A BRIGHTER FUTURE

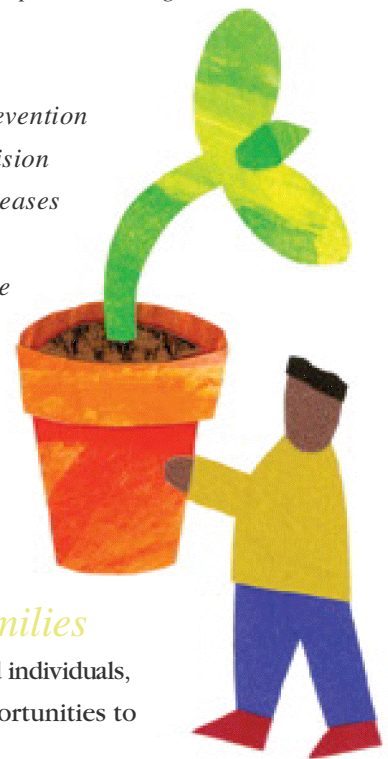


Chranda Ficklin
(standing), with her
mother Emma Sinkfield
Quality of Life
Association
(A Family Connection partner)

Chranda Ficklin is a young woman who beat the odds. Thanks to her mother, Emma Sinkfield, and the work of Family Connection, she grew up in a better Warren County as a healthy child, ready for school, succeeding in school, with a strong and self-sufficient family.

“My passion is youth,” says Chranda, who joined the Teen Connection Committee and started working at the Quality of Life Association (QUOLA) when she was in the ninth grade. “But my other passion is agriculture.” Now that Chranda has two bachelor’s degrees in agriculture, she plans to merge her two passions with her love for community.

Chranda completed an internship at the Seeds of Success Prevention Camp this summer, hosted by QUOLA and sponsored by the division of Mental Health, Developmental Disabilities and Addictive Diseases (MHDDAD). She taught a group of teens how to sow grass and watermelon seeds and was delighted to see the positive influence gardening had on the teens. Chranda hopes to someday teach agriculture and also design a community garden for people with diabetes.



The future for Georgia’s children and families is changing, thanks to the passion and purpose of dedicated individuals, families, communities, and partners, and the unprecedented opportunities to build bridges.

As we look forward to the next year, Family Connection Partnership will continue to support local collaboratives in their work while acting as a resource for state and national partners in linking priorities. By continuing our collaborative efforts, we can look forward to a brighter future for our communities.

For more information on supporting Family Connection collaboratives, visit the Family Connection Partnership Web site to locate your county collaborative.

www.gafcp.org/whoweare/collabs.htm

IMPROVING RESULTS: Communities Making A Difference

	THEN	NOW	TREND
Healthy Children			
1. Increase % of infants born:			
All three components	69.4 (1995)	73.0 (2001)	▲
Weighing 5.5 lbs. or more	91.5 (1995)	92.0 (2001)	=
To mothers receiving prenatal care in 1st trimester	84.1 (1995)	86.0 (2001)	▲
To mothers not smoking or drinking during pregnancy	88.3 (1995)	91.0 (2001)	▲
2. Increase % of children appropriately immunized by age 2	85.1 (1995)	91.0 (1998)	▲
3. Reduce pregnancy rate among females, ages 15-17 (per 1,000)	63.7 (1995)	44.0 (2001)	▲
4. Reduce the homicide rate among youth, ages 15-19 (per	18.4 (1995)	11.6 (1999)	▲

Results:
Improvement
in 4 out of 4
indicators

	THEN	NOW	TREND
Children Ready for School			
5. Increase % of low-income student in Head Start or Pre-K pro-	13.6 (1995)	22.0 (1999)	▲
6. Increase % of kindergarten students who attended preschool pro-	44.7 (1995)	60.0 (2001)	▲
7. Increase % of kindergarten students passing GKAP	87.3 (1995)	88.0 (1998)	▲
8. Reduce % of students two or more years over age in 3rd grade	1.1 (1995)	1.0 (1999)	=

Results:
Improvement
in 3 out of 4
indicators

	THEN	NOW	TREND
Children Succeeding in School			
9. Reduce % of students absent 10 or more days annually	30.9 (1995)	28.8 (2001)	▲
Increase % of students scoring above state standards in 11th grade			
10. Language	91.0 (1995)	94.0 (2001)	▲
11. Math	85.0 (1995)	91.0 (2001)	▲
12. Writing	90.0 (1995)	92.0 (2001)	▲
13. Science	71.0 (1995)	68.0 (2001)	▼
14. Social Studies	81.0 (1996)	80.0 (2001)	▼
Increase % of students scoring above state standards in 8th grade			
15. Reading	54.1 (1995)	49.0 (2000)	▼
16. Math	50.4 (1995)	57.0 (2000)	▲
17. Increase % of students who graduate from high school	69.8 (1996)	71.1 (2001)	▲

Results:
Improvement
in 6 out of 9
indicators

	THEN	NOW	TREND
Strong Families			
18. Increase % of families with first birth			
All three components	59.0 (1995)	59.0 (2001)	=
To mother who completed high school	74.8 (1995)	75.0 (2001)	=
To mother age 20 or older	71.3 (1995)	75.0 (2001)	▲
With father's name on birth certificate	80.6 (1995)	81.0 (2001)	=
19. Reduce % of teen mothers giving birth to another child before	22.7 (1995)	22.0 (2001)	=
20. Reduce incidence of substantiated child abuse or neglect (per	13.8 (1995)	17.8 (2001)	▼
21. Reduce % of youth arrested	6.0 (1995)	5.0 (1999)	▲

Results:
Improvement
in 1 out of 4
indicators

	THEN	NOW	TREND
Self-Sufficient Families			
22. Reduce % of children living in poverty	23.5 (1995)	17.0 (1999)	▲
23. Increase rate of growth in employment	1.8 (1995)	2.0 (2000)	▲
24. Reduce % of persons unemployed	4.9 (1995)	4.0 (2000)	=

Results:
Improvement
in 2 out of 3
indicators



FAMILY CONNECTION COLLABORATIVES

A Network of County Collaboratives

**Appling County
Family Connection**
Amy Rediger

**Atkinson County
Family Connection**
Lynne Vickers

**Bacon County Family
Connection Collaborative**
Kim Vickers

**Baker County
Collaborative**
Benita Hines

**Family Connection of
Baldwin County**
Judy Ivey

**Banks County Family
Connection Commission**
Robin Trotter

**Barrow County
Family Connection**
Courtney Davis

Bartow Collaborative, Inc.
Linda Walker

**Ben Hill Policy Council
for FCAF**
Carlton Mahone, Sr.

**Berrien County
Collaborative**
Gary Chapman

**Family Connection of
Macon & Bibb County**
Mattice Haynes-Amusa

**Family Connection
Community Partnership:
Cochran/Bleckley County**
Karen Watts

**Brantley County
Family Connection**
Laura Kelley

**Brooks County
Family Connection**
Glenn Bissett

**Bryan County
Family Connection**
Tara Jennings

**Bulloch County Commission
on Human Services, Inc.**
Catherine Williams

**Burke County
Family Connection
Collaborative, Inc.**
Deena Sams

**Butts County L.E.T., Inc.
(Life Enrichment Team)**
Sandra Haisten

**Calhoun County
Family Connection**
Teresa Mitchell

**Camden Children's
Alliance & Resources**
Celenda Perry

**Candler County
Family Connection**
Angie Daughtry

**Carroll County Family
Connection Authority**
Vickie Fulbright

**Catoosa
Family Collaborative**
Jane Everett

**Charlton County
Family Connection**
Lynn Crews

**Chatham-Savannah
Youth Futures Authority**
Jacqueline Elmore

**Chattahoochee
Community Connection**
Dave Eversman

**Chattooga
Family Connection**
Vicky Selman

Cherokee FOCUS
Sonia Carruthers

**Athens/Clarke County
Family Connection**
Tim Johnson

**Clay County Family
Task Force**
Alicia Varnum

**Clayton
Collaborative Authority**
Robert Bolander

**Clinch County
Family Connection**
Deedee Thomas

**Cobb Community
Collaborative, Inc.**
Joan O'Connell

**Coffee County
Family Connection**
Robin Justice

**Colquitt County Family
Connection Collaborative
on Children & Families**
Denise Bell

**Family Connection of
Columbia County**
Julie Miller

**Cook Commission for
Children & Youth**
Zola Taylor

**Alliance for
Children's Enrichment
(Coweta County)**
Jan Taylor

**Crawford County
Family Connection, Inc.**
Tawanna Harris

**Crisp County
Community
Council, Inc.**
Kathy Garwood

**DADE FIRST -
Family Connection**
Rebecca Page

**Dawson County
Community Partnership**
Elaine Langley

**DeKalb Initiative for
Children & Families**
Jacqueline Williamson

**Dodge Connection
(A CIS Approach)**
Debbie Connell

**Dooly Community
Enrichment Coalition**
Valecia Sales

**Dougherty for Children
(DCCC&F)**
Anne Stokes

**Community Organizing
Resources for
Excellence!, Inc.**
Amanda Bryant

**Echols County
Child Advocacy Board**
Cortney Reynolds

**Effingham County
Family Connection**
Elaine Spencer

**Community Partnership of
Elbert County**
Valerie Roper

**Emanuel County
Family Connection**
Ray Woods

**Evans County
Family Connection**
Lynne Sroczyński

**Fannin County
Family Connection**
Linda Mahan

**Rome/Floyd Commission on
Children & Youth**
Barbara Earle

**Forsyth County Community
Connection, Inc.**
Elizabeth Cooke

**Franklin County
Partnership, Inc.**
Russell Davis

**The Atlanta/Fulton
Family Connection**
Lesley Grady

**Gilmer County
Family Connection
Commission**
Karen Beary

**Glascok Action
Partners, Inc.**
Wanda Davis

**Glynn County Commission
on Children & Youth, Inc.**
Sandra Hathaway

**Family Connection of
Gordon County**
Peter Psenicka

**Grady County
Children & Youth
Coordinating Council, Inc.**
Deborah Loftiss

**Greene County
Family Connection**
Targie Parks

**Gwinnett Coalition for
Health & Human Services**
Ellen Gerstein

**Habersham County
Family Connection**
Donna Barrett

**Hall County Commission
for Children & Families**
Janet Early

**Hancock County
Community Collaborative**
Tamall Butts

**Haralson Family
Connection Authority**
John Lebowitz

**Haris County
Family Connection**
Aldolphus Hightower

Hart Partners, Inc.
Larry Pool

**Heard County
Community Partnership**
Bethany Huxford-Davis



For Family Connection collaboratives contact information, visit
www.gafcp.org/howeare/collabs.htm

Connecting Henry
(Not available)

HCCCY
"Kid's" Journey
(Houston County)
Leila Anderson

Irwin County
Family Connection
Kim Vickers

Jackson County Family
Connection Council, Inc.
Amber Casper

Jasper County
Family Connection
Tracy Trovillo

Jeff Davis County Family
Connection Council, Inc.
Sherry Cabaniss

Jefferson County
SHIPS for YOUTH, Inc.
Carolyn Swint

Jenkins
Family Enrichment
Julie Chance

Johnson County
Collaborative
Kristie Brantley

Jones County
Family Connection
Sheila Dobbs

The P.L.A.Y. Team
(People of Lamar for
Activities for Youth)
Kim Coursey

Lanier Commission for
Children, Youth & Families
Charles Everitt Jr.

Dublin/Laurens
Commission on Children,
Youth & Families
Connie Smith

Lee FOCUS
Ashley Wiley

Liberty County
Family Connection, Inc.
Letitia Robinson

Lincoln County
Family Connection
Nancy Blount

Long County
Family Connection
William Miller

Lowndes/Valdosta
Commission for
Children & Youth
Ceila Mitchell

Lumpkin
Family Connection
Anita Middleton

Macon County Family
Connection Collaborative
Rachel Oliver

Madison County
Family Connection
Suzette Reeves

Marion County Family
Connection Collaborative
Kevin Brown

McDuffie County
Partners for Success, Inc.
Mary Ann Kotras

McIntosh County
Family
Connection
Genevieve Wynegar

The Meriwether
Interagency
Council Family
Connection
Chris Wilson

Miller County
Collaborative Committee
Sheila Freeman

Mitchell County
Children & Youth
Sheryl Rehberg

Forsyth-Monroe County
Family Connection
Lisa McLendon

Tri County Family
Connection (Montgomery,
Treutlen, Wheeler)
Harry Stevenson

Morgan County
Family Connection
Karen Robertson

Murray County
Family Connection
Mark Millican

Columbus Children,
Youth and Family Coalition
Junie Christian

Newton County
Community Partnership
Stu Taber

Oconee
Family Connection
David Perkins

Oglethorpe County
Social Issues Collaborative
Shamika Barnes

Paulding Collaborative
for Children & Families
Rhonda Heuer

Peach County
Family Connection
Shameeka Brooks

Pickens County
Family Connection, Inc.
Shelia Frances

Pierce County
Family Connection
Matthew Carter

Pike Y.E.S. Team
(You Equal Success)
Lois McDaniel

Polk County Council for
Children & Families
Pamela Gaston

Hawkinsville/Pulaski
County Family Connection
Gwen Brown

Eatonton-Putnam
Family Connection
Janie Reid

Quitman County
Family Connection
(Not available)

Community
Partnership of
Rabun County, Inc.
Tammy Whitmire

Randolph
County Family
Connection, Inc.
Kuanita Murphy

Augusta-Richmond County
Community Partnership
for Children & Families, Inc.
Robetta McKenzie

Rockdale Coalition for
Children & Families, Inc.
Bill Hughey

Screven County Community
Collaborative, Inc.
Wendy Warren

Seminole County
Family Connection
Caroline Chandler

Spalding County
Collaborative Authority
for Families & Children, Inc.
Will Doss

Stephens County
Partners for Success
Becky Bocian

Stewart County
Family Connection
Sherry Witherington

Visions for Sumter
Kimberly Comer

Talbot County FC
Dorothy Bass

Taliaferro County
Family Connection
Collaborative
Jackie Butts

Tattnall County
Family Connection
Barbara Poplin

Taylor County Family
Matters Collaborative
Nancy Peacock

Telfair County
Family Connection
Lucy Comer

Terrell County
Family Connection
Bruce Thomas

Thomas County
Family Connection
Kathy Megahee

Tift County Commission
on Children & Youth
Sandra Wright

Family Connection of
Toombs County
Shari Adam

Towns County
Family Connection
Amy Gibby-Rosser

Tri County Family
Connection (Montgomery,
Treutlen, Wheeler)
Harry Stevenson

Troup Family
Connection Authority
Jack Eatman

Turner County Connection
Sue Mastrario

Twiggs County
Family Connection
Gwen Walker

Union County Family
Connection Commission
Timothy Grizzle

Families, Youth and
Children's Alliance
(Upson County)
Cherrye Witte

The Walker County
Connection
Marlo Watson

Walton County Commission
on Children & Youth
Melinda Quinn

The Children's Initiative
(Ware County)
Curtis Brantley

Family of Families
(Waynen County)
Gladys Evans

Washington County
Family Connection
Roy Jackson

Wayne County
Family Connection
Claudia Smith

Webster County Family
Connection Collaborative
Diane Wills

Tri County Family
Connection (Montgomery,
Treutlen, Wheeler)
Harry Stevenson

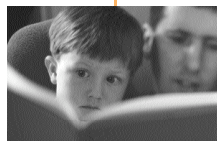
White County
Family Connection
Judi Lawson

Children and Families
First Community Partnership
for Dalton/Whitfield, Inc.
Ann Kuzniak

Wilcox County
Family Connection
Carla Parks

Wilkes County
Community Partnership
Carolyn Reynolds

Wilkinson County
Family Connection
Dianne Orr



FAMILY CONNECTION PARTNERSHIP

Mission

To serve as a catalyst for improving results for Georgia's children, families and communities

Vision

For Georgia's children to be healthy, ready to start and perform better in school, and have stable, economically self-sufficient families.

catalyst

n. An agent that provokes or speeds significant change or action

Board of Directors

Officers

*Albert Wright, Chair
Julian Pafford, Vice Chair
Bobbi Cleveland, Secretary
Bob Patterson, Treasurer*

Members at Large

*Patricia Brunson
Tony Rojas
Terry Walsh*

Members

*Robert Bauer
Ben Boswell
Joey Cason
Gary Cobb
Angela Crance
Greg Dent
Paula Gault
Quintress Gilbert
Glenda Hatchett
Johnny Hatney
Otis Johnson
Edward Jones
Frank "Butch" Jones
Howard Ledford
Doug Reid
Janice Riley
Frank Ros
Emma Sinkfield
Peter Sireno
Lucille Brock Thomas
Tom Upchurch
Ed Weldon*

Ex-Officio Members

*Karen Beavor
Pete Colbenson
Stephen Dolinger
Bill Garrett
Jim Ledbetter
Jim Martin
Susan Phillips
Frank Thomas*

Staff

Executive

Gaye Morris Smith,
Executive Director
Carlisa Beal

Public Affairs and Policy

Taifa Butler, Director
Sheikema Downing
Karen Puryear
Laurie Searle
Naja Williamson
Kathy Young

Fund Development

Ellen Whitlock, Director
Linda Long
Arianne Weldon

State Initiatives and Special Projects

Marian Gamble, Director
Patricia Mitchell
Carol Wilson

Finance and Administration

Don Walraven, Director
Teri Callanan
Majorie Grant
James Hall
Etta Reteneller
Bob Spiridigliozzi

Community Support

Aubrey Harris, Director
John Bringuel
Melanie Gresham-Smith
Andy Kogerma
Paula Semple
Natasha White

Community Facilitators

Region 1 Jackie Harrison
Region 2 Donna Scohier
Region 3 Rita Morgan
Region 4 Joey Mullins
Region 5 Sayge Medlin
Region 6 Kenneth Turner
Region 7 Marcell Johnson
Region 8 Annetta Berry
Region 9 Lou Caputo
Region 10 Jenny Bostick
Region 11 Marion Jay Curry
Region 12 Tarry Rogers

Evaluation Consultants

Steve Erickson
Laurie Dopkins
James Emshoff
Rebekah Hudgins
Ann Peisher
Stanley Schneider
Julie Sharpe





Family Connection Partnership

235 Peachtree Street
North Tower, Suite 1600
Atlanta, GA 30303

(404) 527-7394 ph
(404) 527-7443 fax

www.georgiafamilyconnection.org